



We nurture your strength with  
**dependability &  
resilience**



## Rotary Screw Air Compressor

7.5 kw to 160 kw

- > **SALES**
- > **SERVICE**
- > **SPARES**



# ROTARY SCREW AIR COMPRESSOR



## FILTER SYSTEM

- German Brand Oil Filter
- German Brand Air Filter
- German Brand air Oil Separator
- Equipped with differential pressure transducer
- Automatic reminding for maintenance and replacement



## AIR END

- Large rotor & Large bearings to ensure low speed.
- Linear Screw Rotor.
- SKF Bearings
- High performance, low noise & low vibration



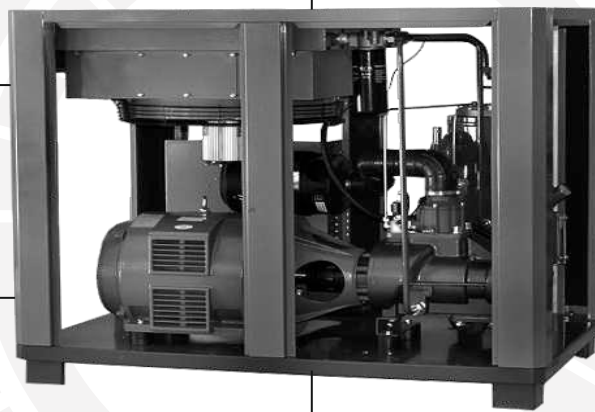
## INTAKE VALVE

- Advance air flow control system
- Air delivery adjustment range 0-100%
- Balance air supply and air consumption
- Energy saving.



## ELECTRICAL COMPONENTS

- France original Schneider electrical components.
- Default phase protection
- Over temperature protection
- Idle load protection
- Automatic unloading
- Automatically adjust air delivery



## MOTOR

- High Efficiency.
- Energy Saving.
- Insulation Grade F.
- Protection Grade IP54.
- Reliable and long lasting durability.



## INTELLIGENT CONTROLLER

- Touch Screen Operation.
- Intelligent human-computer interface.
- Automatic trouble diagnosis.
- Automatic Alarm.
- Equipped with remote control.

## Configuration

### Characteristics

- Direct drive compressors have fewer moving parts and fewer components that can incur wear and tear.
- Direct drive compressors better-suited for heavy duty industrial applications where a belt-driven model won't do.
- Direct drive compressor are more efficient, as less power is lost during transfer from the motors to the crankshaft.
- Direct drive compressor require less fuel over the life of the unit.

### Features:

- 1 year of warranty for Screw Air End.
- Oil Cooler is designed at 45°C ambient temperature which is suitable for Indian Industrial circumstances.
- All Parts are designed with universal design code/standard.
- Consumable cost is low up to 35% compare to others.

One-to-one Gear Less Direct Drive Screw Air Compressor at low speed 2900 RPM large Air End are more efficient than high speed air ends, delivering more compressed air for same drive power. Lower speed means increased efficiency and durability with reduced compressed air cost, less wear and less maintenance cost.



## TECHNICAL SPECIFICATIONS FOR VFD COMPRESSOR

Model	FAD (cfm)@ 8 Bar	FAD (cfm)@ 10 Bar	FAD (cfm)@ 13 Bar	Noise Level db (A)	Installed motor Power (HP/KW)	Compressor size (LxWxH) (mm)	Outlet Connection Size (Inches)
GKE 10 VFD	19.6-42.9	19.6-35.7	19.2-29.6	64	10/7.5	920x650x1050	3/4
GKE 15 VFD	27.3-70.2	27.3-58.8	27.3-53.2	66	15/11	1320x800x1320	1
GKE 20 VFD	26.3-92.2	26.3-79.6	25.8-70.1	66	20/15	1320x800x1320	1
GKE 25 VFD	47.2-117.1	47.2-98.6	47.2-87.2	67	25/18.5	1320x900x1500	1
GKE 30 VFD	52.8-134.0	52.8-115.9	52.0-102.5	67	30/22	1320x900x1500	1
GKE 40 VFD	79.6-199.2	79.6-177.8	79.6-162.0	70	40/30	1500x1000x1450	1 - 1/2
GKE 50 VFD	97.6-224.0	97.6-222.6	97.6-204.2	70	50/37	1400x1000x1580	1 - 1/2
GKE 60 VFD	112.8-282.0	112.8-252.4	110.8-223.2	71	60/45	1500x1000x1450	1 - 1/2
GKE 75 VFD	143.2-358.0	143.2-324.6	141.6-280.4	73	75/55	1800x1210x1830	2
GKE 100 VFD	191.5-478.8	191.5-414.2	190.0-362.4	73	100/75	1800x1210x1830	2
GKE 120 VFD	208.0-594.0	208.0-516.0	202.0-472.0	74	120/90	2420x1540x2040	3
GKE 150 VFD	244.8-698.2	244.8-610.0	242.0-538.6	74	150/110	2770x1890x1940	3
GKE 180 VFD	292.0-832.4	292.0-682.8	290.0-592.6	75	180/32	2650x1800x1850	3

## TECHNICAL SPECIFICATIONS FOR FIXED SPEED COMPRESSOR

Model	FAD (cfm)@ 8 Bar	FAD (cfm)@ 10 Bar	FAD (cfm)@ 13 Bar	Noise Level db (A)	Installed motor Power (HP/KW)	Compressor size (LxWxH) (mm)	Outlet Connection Size (Inches)
GK 10	42.2	36.0	28.2	67	10/7.5	800x660x1050	3/4
GK 15	69.4	58.0	52.8	69	15/11	1320x800x1320	1
GK 20	90.7	76.2	68.9	69	20/15	1320x800x1320	1
GK 25	114.2	96.8	85.4	71	25/18.5	1320x800x1320	1
GK 30	132.0	114.2	100.8	71	30/22	1320x800x1320	1
GK 40	198.2	175.8	160.4	71	40/30	1500x1000x1450	1 - 1/2
GK 50	242.4	213.8	193.0	72	50/37	1500x1000x1450	1 - 1/2
GK 60	280.6	236.3	211.2	72	60/45	1500x1000x1450	1 - 1/2
GK 75	358.0	324.0	260.8	73	75/55	1800x1150x1650	2
GK 100	477.2	412.6	342.2	73	100/75	2000x1210x1750	2
GK 120	594.0	506.0	472.0	75	120/90	2170x1930x1570	3
GK 150	698.0	588.0	539.0	75	150/110	2920x1990x1780	3
GK 180	832.0	682.0	578.0	76	180/32	2800x1900x1690	3

# AIR REFRIGERANT DRYER

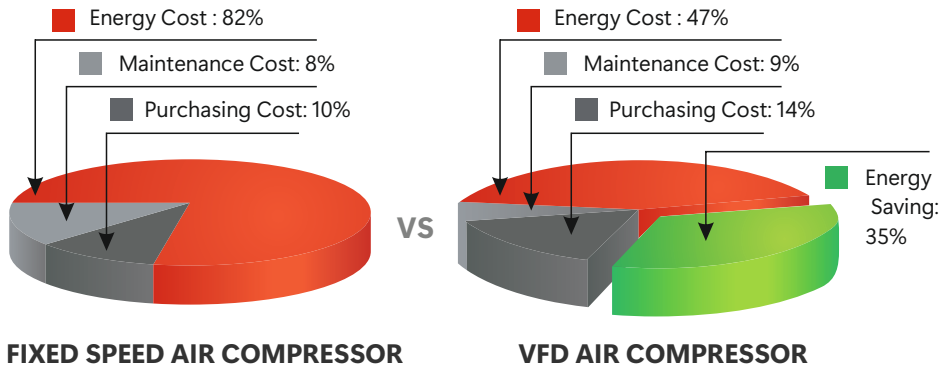
## TECHNICAL SPECIFICATIONS FOR

Model	Air Flow		Width	Depth	Height	Weight	Power Supply	Air Connection (BSPPF) ANSI B 16.5 CL. 150
	cfm	m3/hr						
GK 001 AD	10	17	360	460	460	31	230 / 1	1/2"
GK 002 AD	20	34	160	460	460	32	230 / 1	1/2"
GK 004 AD	40	68	400	520	460	36	230 / 1	3/4"
GK 006 AD	60	102	400	520	460	37	230 / 1	3/4"
GK 008 AD	80	136	450	630	550	54	230 / 1	1"
GK 010 AD	100	170	450	630	550	55	230 / 1	1"
GK 012 AD	125	212	450	630	550	56	230 / 1	1-1/2"
GK 015 AD	150	255	500	800	820	79	230 / 1	1-1/2"
GK 020 AD	200	340	500	800	820	90	230 / 1	1-1/2"
GK 025 AD	250	425	500	800	820	95	230 / 1	2-1/2"
GK 030 AD	300	510	600	950	1060	138	230 / 1	2-1/2"
GK 035 AD	350	595	600	950	1060	140	230 / 1	2-1/2"
GK 040 AD	400	680	600	950	1060	142	230 / 1	2-1/2"
GK 050 AD	500	850	600	950	1060	144	415 / 3	2-1/2"
GK 060 AD	600	1020	600	950	1060	148	415 / 3	2-1/2"
GK 075 AD	750	1275	700	950	1450	475	415 / 3	DN100
GK 100 AD	1000	1700	800	1075	1615	520	415 / 3	DN100
GK 125 AD	1250	2125	800	1075	1615	530	415 / 3	DN100
GK 150 AD	1500	2550	1000	1600	1630	600	415 / 3	DN100
GK 150 DW	1500	2550	1150	1400	1630	550	415 / 3	DN100
GK 200 DW	2000	3400	1150	1400	2000	650	415 / 3	DN150
GK 250 DW	2500	4250	1150	1400	2000	655	415 / 3	DN150
GK 300 DW	3000	5100	1150	1700	2000	700	415 / 3	DN150
GK 400 DW	4000	6800	1150	1700	2000	750	415 / 3	DN200
GK 500 DW	5000	8500	1150	1600	2000	985	415 / 3	DN200
GK 600 DW	6000	10200	1500	1900	2000	1250	415 / 3	DN200
GK 700 DW	7000	11900	1800	2500	2100	1550	415 / 3	DN250
GK 800 DW	8000	13600	1800	2600	2100	1750	415 / 3	DN250
GK 900 DW	9000	15300	1800	2600	2100	2250	415 / 3	DN250
GK 999 DW	10000	17000	1800	2600	2100	2500	415 / 3	DN300

Note: For more than 1000cfm kindly contact our office. Water cooled option are available from 500 cfm onwards. Air cooled version can be given any capacity upon request.



**COMPARISON OF FIXED SPEED AND VFD COMPRESSORS IN 5 YEARS**



**SPECIALIST FOR LASER CUTTING**



Pharma Industry



Steel Industry



Knitting Industry



Auto Industry



Food & Beverage



Printing Industry



Plastic Industry



General Engineering



Auto Workshops



Power Plants



Paper Industry



Food Industry

Designed By:  
**Grainemedia**  
Mobile: 99885-58019



Business in Screw Compressor's Spare & Service

Office: Shop No. 1, Mangli Nichhi, Focal Point, Ludhiana-141010, Punjab, INDIA

Phone: (+91) 161-2933008 > Mobile: (+91) 75086-97092

Email: gkinfor1313@gmail.com >

Helpline No.: +91-75087-97092